

Fellowship Program

The Fellowship Program allows an organization to choose and frame a research topic relating closely to an important decision the organization is facing.

In cooperation with GMI, an organization assigns a Fellow to step away for three one-month periods over one year.

Fellows travel to select partner locations for planning and writing during those months.

During the rest of the year Fellows carry out ongoing research at home seeking answers to ministry problems.

Over the year GMI and partner institutions assist Fellows with research advice and resources.

Organizations interested in fielding a Fellow are invited to make inquiries directly to GMI.

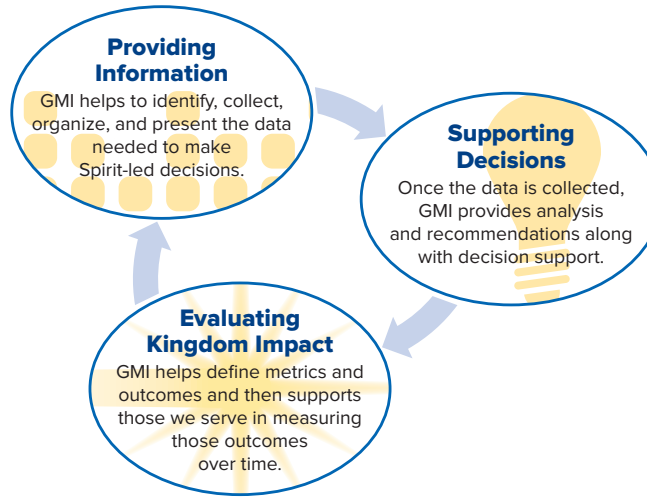
Are you interested in GMI SearchLite and Fellowship Programs?



Request an application by contacting our Global Engagement Director,
Nelson Jennings
Nelson.Jennings@gmi.org



Stewarding
Knowledge
for **Impact**



Knowledge Stewardship:

The Spirit-led process of acquiring and insightfully using information for God's glory and according to His purpose.

We are swimming in data, but do we know how to use it wisely and effectively?

That's the mission of GMI: leveraging research and technology to create, cultivate, and communicate missions information leading to insight that inspires Kingdom service.

Through the Knowledge Stewardship Cycle we are involved with our partners in Providing Information, Supporting Decisions and Evaluating Kingdom Impact.



Do you have a passion to help ministries steward knowledge for impact? If so, let's work together!

Jon Hirst
President GMI

GMI SearchLite and Fellowship Programs

For ministries seeking mission breakthroughs through short-term research



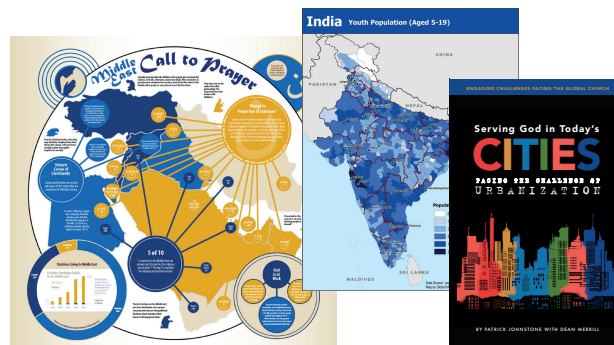
SearchLite Program

SearchLite is designed for senior Christian leaders who need specific insight into their organization's challenges, activities, or results. *SearchLite* allows a leader to delegate research fieldwork to a staff member while having the opportunity to participate in the research process.

A *SearchLite* research project – including fieldwork and reporting – takes one month from start to finish. At that time the leader receives a short summary designed to help the organization make an informed, Spirit-led decision. Every *SearchLite* project includes a piece, like the “Community Physician’s Prayer,” promoting

change based on the research insights. They also write a longer statement of their research methods and findings.

The sponsoring organization gains both insight into the topic researched, as well as research experience they can apply to other topics in the future.



The Community Physicians Prayer

To look at them with compassion
To listen to them with empathy,
To speak to them with gentleness,
To understand them in love,
To treat their disease with wisdom,
To answer them in patience,
We pray dear Lord as we care for the least of these.
Touch them more deeply than we can,
And when they see us,
May they see you.
Amen

A photo poster prepared by Dr. Amy Mathew, including a prayer based on her SearchLite research about doctors and illiterate patients.

Fellows participate in research in one or more of GMI's three ministry services:

Data-Rich Publishing Services

GMI partners with others to publish digital and print products that take key research and information and popularize it for mobilization, decision making and greater missions understanding.

Research Services

GMI provides a full range of research services to help Christian ministries better understand their environment and constituents, assess the impact of their current approaches, and better plan for new ministry opportunities and trends. We provide training in research methodologies, instrument design, and field work. One powerful tool is the Breakthrough! curriculum for Spirit-led research.

GIS/Mapping Services

GMI creates custom geographic maps and provides technology solutions for geographic analysis to meet specific ministry needs. We develop, maintain, and distribute powerful geographic information system (GIS) software and global geographic databases—and provide training and support services—to empower GIS professionals who enable missions leaders to see their world, chart their course, and tell their story in vivid detail.